



Rochester Area

autism

Resource Guide

www.AutismResource.guide



WHAT IS THIS?

A free resource for families in Southeast Minnesota created to share information about resources and services available for families and individuals with autism.

The best efforts to provide an accurate guide were made. We do not endorse the included organizations or their services. Please use this as an aid as you make the best decision for your loved one.



QUESTIONS WE ASKED

- 1. Who are you?**
- 2. What service(s) do you provide for families with autism? Why?**
- 3. Is there any information/resources you feel families would benefit from knowing? (We only printed what wasn't a repeat elsewhere in the guide!)**
- 4. How may families contact you?**

THANK YOU SPONSORS!



AUTISM ADVOCACY
& LAW CENTER LLC.



THERAPEUTIC
HEALTH



NORTHERN STAR
behavioral health llc



MAYO
CLINIC



The Rochester Center
for Children



CARAVEL AUTISM HEALTH



Minnesota
Autism Center



Music Therapy LLC





Helping You Meet Their Needs



612.200.9920
Serving Minnesota since 2009



AUTISM **ADVOCACY**
901 North 3rd Street, Suite 120
Minneapolis, MN 55401 & LAW CENTER LLC.

TABLE OF CONTENTS

1	Medical Diagnosis & Treatment
3	Mental Health
5	Applied Behavior Analysis (ABA) Therapy
7	Speech Language Pathology (SLP)
9	Augmentative & Alternative Communication (AAC)
10	Occupational Therapy (OT)
12	Physical Therapy (PT)
13	Music Therapy
15	Recreation
19	Education
21	Transportation
22	Day Programs & Respite Care
23	Housing, Independent Living, & Vocational
27	Legal
29	Planning: Financial, Guardianship, Estate, etc.
30	Advocacy
32	Government Services
35	Inclusive Stores
36	Family Support Groups
39	Family Friendly Locations
42	Sensory Friendly Trips



therapy & fitness

R E I M A G I N E D

Childhood development is complex and filled with needs to reach milestones, overcome obstacles, and build skills for future independence. Our team of therapists specialize in creating individualized programs to guide development for children (ages birth - 17) and families for each stage of life.

Serving Children & Teens Experiencing:

- Speech & Language Difficulties
- Neuromuscular Disorders
- Emotional & Social Development Needs
- Delayed Development

We offer classes, camps, and one-to-one therapeutic programs.

To get started, contact our team at (507) 259-7570.

Our comprehensive, fun, and positive approach will supplement school-based and early childhood therapy programs in the areas of:

Physical, Occupational, & Speech Therapies

Build skills and abilities to achieve milestones such as crawling, talking, socially interacting, and walking.

Health Coaching & Nutrition

Learn and practice making choices for lifelong health.

Therapeutic Play

Practice integration of skills learned in therapy, participate in sensory exploration to overcome anxiety, and build skills in an inclusive and safe social environment.



At EA, we are committed to providing access to the best therapeutic support for all regardless of insurance or ability to pay. Inquire about our scholarship opportunities designed to set each child up for success.

THERAPEUTIC HEALTH

Formerly ExercisAbilities

(507) 259-7570 | ChooseEA.org





NOW ENROLLING

WE'RE HERE TO GUIDE YOU.

The world of behavioral health can be complex and overwhelming. We're here to help. We offer one-to-one and group behavioral therapy under the direct supervision of a BCBA, as well as parent groups, play groups, and more.

WWW.NORTHERNSTARMN.ORG



NORTHERN STAR

behavioral health llc



OWL THERAPY SERVICES

SPEECH THERAPY
OCCUPATIONAL THERAPY
PHYSICAL THERAPY



Why choose us?

- Free no obligation first visit!
- In-home therapy options
- Convenient NW location
- Family focused involvement
- Collaboration with schools and other providers
- Telehealth available



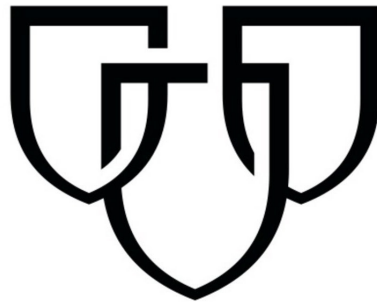
FIND OUT MORE!

www.owltherapyservices.com

507-722-1508

Find us on Facebook!

MAYO CLINIC



Minnesota Independence College and Community (MICC)

Minnesota Independence College and Community (MICC) is a nonprofit vocational and life skills training program for autistic and neurodiverse young adults. For over 25 years, our unique campus in Richfield, Minnesota, has provided participants who desire growing independence with the opportunity to engage in hands-on learning, education, support, and resources.

Learn Skills. Experience Life. Our programs deliver curriculum and services in the areas of independent living skills, social and emotional learning, career skills and employment, and healthy living. We offer five distinct programs starting with our **Summer Program**, leading to our three-year **College** and **Careers Programs**, and next, with our life-long **Community Program**. Finally, our vibrant **Social Program** is integrated into our summer, three-year, and life-long program options.

We invite you to learn more about MICC by visiting our social media platforms @micbullogs and attending events, which can be found on our homepage. We look forward to connecting with you!

Website: www.miccommunity.org

Phone Number: 612-869-4008

Email: admissions@miccommunity.org

Medical Diagnosis & Treatment

Mayo Clinic

Mayo Clinic Health System
Department of Pediatric and Adolescent Medicine
Division of Developmental and Behavioral Pediatrics
Mayo Clinic Neurodevelopmental Disorders Program



The Division of Developmental and Behavioral Pediatrics at Mayo Clinic has a long history of caring for children and youth with autism and other neurodevelopmental and behavioral disorders. Our team includes audiology, child psychiatry, developmental-behavioral pediatrics (DBP), neuropsychology, pediatrics, nursing (RN), social work (SW), and speech-language pathology. Our team conducts multidisciplinary evaluations with the entire team or core team evaluations with a DBP/Pediatrician, SW, and RN. We also work with families who are seeking a management plan, or diagnostic clarity. Molly Harrington, LICSW, MSW, is the social worker at the Integrated Community Specialist Developmental Clinic at Baldwin Building. She has compiled lots of resources from team members, parents, Dev Disability Case mgrs, etc.

200 First St. SW
Rochester, MN 55905

General number 507-284-2511
Appointment Office 507-538-3270

Olmsted Medical Center

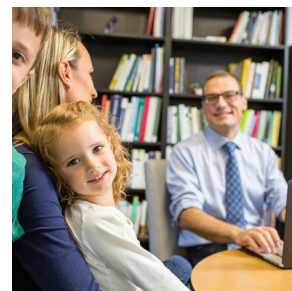
For families and individuals with autism, Olmsted Medical Center provides care and support in our Pediatrics and Family Medicine departments. Parents with questions or concerns are invited to talk with their child's primary care provider. If needed, the primary care provider is able to provide referrals to other areas, include to the Psychiatry and Psychology department.

Neighborhood Naturopathic

Andrew Litchy, ND
Neighborhood Naturopathic
6600 France Ave #485
Edina, MN 55435



Neighborhood
Naturopathic



www.neighborhoodnaturopathic.com
612-259-8529

I provide naturopathic care for children with ASD, ADHD and other related diagnoses; I help kids be their best self through optimizing diet, lifestyle, nutrition, and addressing root causes of symptoms. Through a careful clinical history, exam, and specialized lab testing we can find effective treatment approaches to support optimal development and find and address the root causes of symptoms. I offer complementary phone consults to answer any questions and see if the practice is a good fit. You can schedule online, or call.

Woods Psychological Services of MN

We provide diagnostic assessments and psychological evaluations (including autism-specific testing) as well as CMDEs for families who want ABA services (if you're already on a waiting list, having a CMDE already completed can speed the intake process up significantly). Depending on what is needed, we are currently scheduling 2-4 weeks out. We do have some providers who provide individual and family therapy but there is currently a waiting list for this. WoodsMN.com is our website, which includes contact and referral information. We can provide services over telehealth as well as in-person (offices in Winona and Golden Valley).

www.woodsmn.com

Fernbrook Family Center

See page 3 in Mental Health.

Mental Health

Birchlawn Place Counseling Center, Inc.

www.birchlawnplace.com

Fernbrook Family Center



We are located in 8 locations across Southern MN (Rochester, Kasson, Red Wing, Austin, Owatonna, Faribault, Waseca, Mankato). We provide diagnostic assessments, individual/group/family skills, individual/family therapy, and medication management.

intake@fernbrook.org
504-446-0431

Nystrom and Associates



Nystrom & Associates was founded in 1991 to provide quality care to those in need. We have over 40 locations in three states to serve your needs. We provide in person and telehealth services.

Nystrom & Associates offers autism spectrum disorder evaluations and therapy. Therapy can help autistic adults and children in many ways. Therapists who specialize in autism can connect autistic people to additional services, offer coping strategies, and educate adults about life on the spectrum. A therapist can also help autistic adults talk to others about their diagnosis and manage relationship challenges. In addition, therapy can help a person cope with the social or economic barriers that may have delayed their diagnosis.

To schedule an appointment:
ph: 651.628.9566
www.nystromcounseling.com/request

PrairieCare Medical Group Southern MN



We offer a Specialty Partial Hospitalization Program for adolescents (11-18) with ASD/Neurodevelopmental concerns and mental health needs. In addition, our general mental health track would be a fit for younger children (6-11) with ASD and Mental/Behavioral health needs. We also offer a 100% FREE Needs Assessment to provide an avenue for patients to follow, whether in our program or a program in the community.

Families can call 507-218-3701 to learn more or schedule the FREE Needs Assessment.

Whole & Happy Living

Whitney Prude, PharmD, BCPS, NBC-HWC,
Owner and CEO of Whole & Happy Living.



One of the challenging aspects of being a care taker is that you often don't have time to prioritize your own health and wellness. I help individuals learn how to prioritize and transform their health no matter what their circumstances are. You may not feel that you have the time, but the reality is, you don't have time to not have time. Your family needs you for many years to come and you deserve to live your very healthiest and fulfilling life.

If you are ready to make a change that will transform the rest of your life, please reach out and let's get you moving!

www.mywholeandhappylife.com
wprude@mywholeandhappylife.com

Zumbro Valley Health Center

www.zvhc.org

Applied Behavior Analysis (ABA)

Caravel Autism Health



We are Caravel Autism Health located at 1470 Industrial Drive NW in Rochester. We provide ABA services to children with autism spectrum disorder and related disorders. Our mission at Caravel is simple, but encompasses the driving force behind our work: We Change Lives. Our clinical team focuses on creating better outcomes for everyone involved in autism care - from the clients and families we serve to our staff of incredible teammates! Our experiences with the children we support are everything to us. Our work is driven by the belief that progress and growth are always possible, and we support progress through evidence-based, innovative, and compassionate care.

The RT Autism Awareness Foundation (RTAAF) is a great partner for families navigating a new autism diagnosis. They provide a significant level of support and have a wide knowledge of the autism community.

Families interested in accessing services can reach our intake department by phone at 312.854.7385 or email at intakecoordinators@caravelautism.com. Our Rochester Clinic can be reached directly at 507.322.7750 or by emailing our Clinic Director, Stephanie Trowbridge at strowbridge@caravelautism.com

Minnesota Autism Center (MAC)

We provide ABA therapy supplemented by Speech Therapy and Occupational Therapy to children ages 18 months to young adults aged 21 years. Our vision is that everyone dealing with autism reaches their highest potential.



Families interested in our services can find us at www.mnautism.org or call 952-767-4200.

Northern Star Behavioral Health

We are a new in-home and community-based organization serving SE Minnesota. We provide play-based applied behavior analysis (ABA) therapy in naturally occurring environments. Our providers bring years of experience in both mental and behavioral health, and work collaboratively with a number of area professionals to ensure that families and individuals are provided with comprehensive support.

For more information, please visit our website at www.northernstarmn.org or e-mail us directly at info@northernstarmn.org



Partners In Excellence

www.partnersmn.com

Rochester Center for Children (RCC)

Rochester Center for Children
1811 Greenview Pl SW, Rochester, MN 55902
507-424-3234
www.rcautism.com

The Rochester Center
for Children

We are primarily a one-on-one center-based ABA therapy program for children on the spectrum. We offer an array of other services such as individual psychotherapy, marriage and family counseling, group therapy, social skills programming, home therapy, consulting, etc. We have been family owned and operated since 2004. Please come take a tour to learn more about our center and our philosophy! There are lots of great resources and providers in town. We are more than happy to help families/individuals learn about what is available in our community.

Speech Language Pathology (SLP)

A Sounding Therapy

Bethany Renstrom, Speech Pathologist
and Owner of A Sounding Therapy, LLC.

A SOUNDING THERAPY

I provide a variety of speech and language therapy techniques to find what works best for each child. I am also trained in AAC to help kids communicate their best. I have been practicing and working with children as a certified SLP since 2008. Families can learn more by visiting my website at www.asoundingtherapy.org or contact me at bethany@asoundingtherapy.org. Children can receive individualized sessions during the summer months to boost their communication skills.

Achievement Therapy Services

Jennifer Leuthold, SLP



We offer services for all ages, including consultations, evaluations, individual and group therapy. We provide intervention for delays and disorders of speech, language, social language, cognition, and voice. We specialize in providing social-cognitive intervention for individuals who do not have the intuitive means to pick up on what is expected of them in social situations--anywhere he or she shares space with others. Often individuals with social-cognitive difficulties have concurrent diagnoses of Autism Spectrum Disorders (ASD), ADD/HD, Nonverbal Learning Disability (NVLN), but many do not have contributing diagnoses.

www.achievementtherapyservices.com

EA Therapeutic Health

See page 12 in Physical Therapy.

OWL Therapy Services

Lauren Glessing, OWL Therapy Services

We provide speech and language therapy as well as occupational therapy for individuals with autism. OWL Therapy Services also provides peer groups and summer groups in the area of social enhancement. We are also expanding to provide support groups for family members.

You can call us at 507-722-1508, visit our website at www.owltherapyservices.com or find us on Facebook at @owltherapyservices

We can't wait to meet you!



Tonns of Fun Therapy

Tonns of Fun Therapy provides a child-centered treatment approach, helping children of all ages achieve their maximum potential despite speech, language, and other disorders. Speech disorders that result in difficulty with articulation, phonology, fluency, resonance, and/or voice disorders. Language disorders that involve challenges with comprehension and/or use of spoken, written and/or symbol systems. Cognitive disorders that lead to deficits in the areas of memory, attention, organization, problem-solving/reasoning, and executive functioning. Our staff specialize in evaluating and treating children diagnosed with autism spectrum disorder and other disabilities. Using "just right" activities in play, our therapists help children reach their full potential through developing: language and processing skills, articulation, oral motor skills, eating and swallowing abilities, and social skills.



Tonns of Fun Therapy

Phone: 507-252-1988

Email: tonnsoffuntherapy@gmail.com

Website: www.tonnsoffuntherapy.com

FB @tonnsoffuntherapy

Augmentative & Alternative Communication (AAC)

Talk To Me Technologies



We bring speech to life™
— with technology that helps improve communication.

Talk To Me Technologies offers alternative and augmentative communication (AAC) systems for children and adults with significant communication difficulties resulting from autism as well as many other diagnoses that may inhibit verbal communication. Our comprehensive systems are equipped with custom vocabulary and access methods including switch scanning, head tracking, and eye tracking to assist individuals with low mobility. With a 97% positive customer satisfaction rate, our all-inclusive systems and services make it easier and faster to choose, fund, and support AAC use, so YOU can focus on communication.

TTMT offers support to individuals and their families, including those with autism, during and after the process of obtaining a speech generating device. Our AAC Consultants can assist with the selection, insurance funding, training, and implementation of a customizable AAC device. They can help with demonstrating equipment, alternative access methods, vocabulary selection, editing and customizing vocabulary, securing a trial device if needed, and so much more. Once an individual has received their very own TTMT device, our consultants and/or training specialists will arrange a time to get that individual and their family, caregivers, teachers, etc. acquainted with the new device so communication can start right away.

TTMT offers a comprehensive gallery of support materials specifically for SLPs and families to utilize when implementing an AAC system. Our materials are created with the guidance of our SLPs, utilizing their clinical and industry experience to better serve the AAC community. We are constantly adding new and updated resources to our gallery (listed below). We recommend anyone interested to join our email list to receive notifications about new materials. Free downloads are available on our website AAC Lesson Plans for Speech Language Pathologists, Parents and Caregivers. For specific contact information, please reference our website where you will be able to find information about different departments and services we provide. Our website offers contact forms to better assist your specific needs.

Phone: 877.392.2299 | Website: talktometechnologies.com

Occupational Therapy (OT)

Courage Kenny Rehabilitation Institute Owatonna, MN | Allina Health

When you, your child or other family members need rehabilitation for a short-term injury or a long-term condition, we're here to help. You can choose from rehabilitation, support and lifestyle services. Conditions treated include sports injuries, joint problems, cancer treatment side effects, pelvic pain and incontinence, stroke and problems affecting children.

You'll find specialized rehabilitation services for kids available from our Courage Kenny Kids therapists. Therapy takes place in a bright and cheerful space that includes a gym and private treatment rooms. A climbing wall is available to improve motor skills, and stretch and strengthen muscles. And there's an area for you to watch your child's therapy session on video. All of these services are conveniently located on the Owatonna Hospital campus, where there is ample parking.

Here are a couple general resources I've come across that I've provided to families to learn more or find specific types of support:

www.thecolorofautism.org/
www.embrace-autism.com/



EA Therapeutic Health

See page 12 in Physical Therapy.

Nurture in Nature Therapy Services

Caitlin Lamping, Nurture in Nature Therapy Services

Nature-based occupational therapy services, including group and individual therapy, summer camps, and weekly nature storytimes. To support neurodiverse families and help them solve the problems that are affecting their lives, to help kids feel more calm, confident, and connected.



Resource to take a look at: www.livesinthebalance.org
Email me at info@nintherapy.com or call 507-200-2477

Storytime Saturdays 10 a.m. at 3 Links Park in the the warm months, at Spark in the winter (see website for details nintherapy.com/storytime)
Summer camps and weekly nature groups (nintherapy.com/summer-camps)
Occupational therapy and feeding therapy, in-depth evaluations and treatment.

OWL Therapy Services

See page 8 in Speech Language Therapy.

Tonns of Fun

See page 8 in Speech Language Therapy.

Physical Therapy (PT)

EA Therapeutic Health



Melanie Brennan, Founder & CEO of EA Therapeutic Health
(Formerly EA Pediatrics and ExercisAbilities)
Located in Rochester, MN.

THERAPEUTIC
HEALTH

EA Therapeutic Health is proud to provide services that are specialized for children who are on the spectrum. We know that each child is unique, and needs will change from birth to adulthood. This is why our services are customized to the needs of the child throughout every stage of their life. We provide physical therapy, occupational therapy, speech therapy, therapeutic play, parent and family education, health coaching, and adaptive health and fitness. Our team of trained professionals receive continual education regarding support for children and families, and our service offerings expand and adjust according to science, education, and most importantly, the needs of those we support.

Many times, it is a misconception that a medical referral from a provider is necessary to seek out service with us. This is not the case, so we encourage families to reach out to us to learn more. Although we provide a plethora of services, we encourage partnership with caregivers, educators, and other providers to provide wholistic and sustainable support. We also thrive when we can connect children and families to resources for autism (books, websites, apps), connect them with other families, and grow with them throughout their life.

For more information, contact us at 507-259-7570 or complete a contact form on our website - www.chooseea.org. You do not need a medical referral from a medical provider prior to contacting us.

Music Therapy

Healing Rhythms Music Therapy

Healing Rhythms Music Therapy, LLC believes in “empowering lives through music”. With a combined 50+ years of supporting individuals with autism, our team of board-certified music therapists (MT-BC) utilizes music to empower people of all ages and abilities. Healing Rhythms offers individual, group sessions, school and community partnerships, and adaptive music lessons in our Rochester and St Peter Clinics, as well as remotely throughout 30 counties in greater southern and central MN. Music Therapists use music as our tool in combination with therapeutic interventions to support individualized goals. This may include communication, cognition, behaviors, social skills, and emotional regulation. Healing Rhythms is an approved provider with DHS and works closely with others supporting your loved one to coordinate goals and services, including case managers, social workers, and medical providers to determine if grant funding or waivers are an option for payment. Healing Rhythms is here to serve the needs of individuals and organizations in the community and be a resource to answer any questions about music therapy. www.healingrhythmsmt.com



Music Care Therapy

I am Jenny Kruse, a Board-Certified Music Therapist (MT-BC), and owner of Music Care Therapy, LLC (previously known as Jenny Kruse Music Therapy, LLC). We provide music therapy services through 1:1 and group sessions, as well as adaptive music lessons on various instruments. Music therapy sessions involve using music as a tool to help people with different abilities learn and practice functional life skills. Adaptive music lessons help people with different abilities learn to play an instrument such as piano or guitar.



Music therapy is an established health care profession that uses research-based techniques to address functional objectives. For those with Autism, nationally certified music therapists (MT-BC), develop treatment plans based on individual assessments. Treatment may focus on developing skills in areas including sensory integration, attention, communication, motor planning, social skills and anxiety management. A music therapy session may appear to be just fun music games, but each session is tailored to meet specific objectives to help the client learn functional skills to use in real life.

Music Care Therapy, LLC
1130 1/2 7th St. NW #208
Rochester, MN 55901
Phone: (507) 282-3730
jennykruse@musiccaretherapy.com
Website: musiccaretherapy.com

Vivian Lark

Piano Lessons Instructor
821 3rd Ave SE Suite 85, Rochester 55904

I provide Adaptive Music Lessons to students that are on the spectrum.
I have been teaching kids on the spectrum for almost 3 years.

I treat each student as an individual and I teach with patience and understanding. Healing Rhythms in Rochester is able to provide instruction with other instruments yet right now I teach only piano and voice.

Email is best: vivian.j.lark@gmail.com
Or text: 507.722.8305

YouTube Channel including performances
by students, both typical cognitive learners
as well as students with autism.



Recreation

Rochester Parks & Recreation Department AccessAble Recreation Division

MISSION: Provide recreational activities enriching the social development and experiences of persons with diverse intellectual and physical abilities. We provide a year-round program encompassing a variety of social, physical and leisure activities; We use recreation as “play with a purpose” to engage participants in healthy leisure activities to cultivate, maintain, and/or enhance their emotional, physical, and social well-being; We focus on promoting each person’s ability: to encourage maximum independence & participation.

Karen Meyer
AccessABLE Rec. Coordinator
Rochester Parks & Recreation
201 4th Street SE, Room 150,
Rochester, MN 55904
Office: 507-328-2539
www.rochestermn.gov/parks
Find us on Facebook @rochestermnparks
Email: kmeyer@rochestermn.gov



Bowlocity Entertainment Center



We run an adaptive bowling program for people with disabilities, both physical and developmental. We have all ages and skill levels participate. The program runs every other Saturday in the fall and in the spring. More information can be found on our website www.bowlocity.com and the best method of contact is info@bowlocity.com

Courage Kenny Rehabilitation Institute | Owatonna, MN | Allina Health

See page 10 under Occupational Therapy.

Ironwood Springs Christian Ranch

Ironwood Springs Christian Ranch provides programs for people with cognitive and physical disabilities, and for military families. It is an inclusive and accessible camp and retreat/conference center located on 120 acres, 15 miles southwest of Rochester. Many of its facilities are accessible, including activities such as zip line, horseback riding, and mini-golf. We serve over 15,000 people annually.

We provide a comprehensive range of transformational experiences for families who have a loved one living with Autism Spectrum Disorder (ASD) through our Breaking Barriers Programs. Our autism programs offer a fun, family-focused environment with services designed around each child's (and adult's) unique needs. We provide ranch experiences (camps, day programs, and retreats) that expose them to new life skills by tapping into their favorite activities and interests to make experiences more fun, approachable, and accessible. One of the well-known traits of autism is that those who live with autism struggle with social interactions. By taking part in inclusive, hands-on, life experiences with their family at the ranch can help improve their communication, collaboration and teamwork skills. Inclusion is about offering the same activities to everyone, while providing support and services to accommodate people's differences. Our goal is to be an organization that actively reaches out to families living with autism that provides a loving community where they can understand and appreciate their differences, while fostering a sense of belonging. We saw this as a great need in the community, and refocused much of program goals to reaching and supporting this population. Events and retreats are designed to connect families with one another and provide an accessible way for families to enjoy Ironwood. Parents need support from an understanding community who are facing the same challenges. Siblings need time with peers who are going through a shared experience. Children with autism need understanding and a safe environment to experience the freedom to be themselves. Each retreat emphasizes experiential learning, providing the space to work on social development and interaction, motor function and sensory integration. We also work with various advocates of the autism world and have them come and be a keynote speaker at many of our events. Such as Kate Swenson, a local Minnesotan, who has recently wrote a book called "Forever Boy" which has caught national attention due to its powerful message, which would be an incredible resource for others. A program we are looking to launch is Autism Sensitivity Training to local businesses and organizations, so as to provide support to companies hiring those living with autism.

IRONWOOD SPRINGS CHRISTIAN RANCH
7291 County Road 6 SW, Stewartville, MN 55976
www.ironwoodsprings.com



RideAbility



RideAbility provides therapeutic and recreational horseback riding for children and adults with special needs. We desire to serve families in SE MN, people who need therapeutic outlets. We have gentle horses to share. We offer 3 things: 1) Registered group lessons and Monday and Tuesday afternoon/evening hours (this is our main offering). 2) Privately scheduled lessons to accommodate specific needs, limited by instructor availability. 3) OneTimeFunTime group visits can be scheduled (when possible) to support groups serving people with special needs.

RideAbility is a member of PATH Intl. (Professional Association of Therapeutic Horseback riding) - they are an organization to oversee safety standards and support therapeutic ideas and offerings.

Email Jeanie at promisedmeadows@gmail.com or call at 507-271-8908. It is best to plan an orientation visit to RideAbility for your very first visit. We want to be sure you are comfortable at the facility and that you can envision your classes - while we get an initial plan for what accommodations we will need to serve your family. Visit our website at www.rideability.org

Rocca Rock Climbing



We have the ability to work with most anyone who walks through our doors. We are a very beginner friendly climbing gym and we strive to make it very easy to try climbing. Depending on your needs you may only need us to help you on your first climb or two. All the way up to one on one instruction with our staff. Climbing is such a passion of ours, that we believe everyone should try climbing no matter your ability. To help facilitate this we started a non-profit in 2018 called Thrive Through Movement. www.thrivethroughmovement.org. On the website you can see our "Adaptive Climbing Initiative" page.

For Autism specifically, just google "Rock Climbing Autism" and you will find many great articles on the benefits and success stories! You can email us with any questions at info@climbroca.com

6071 Rome Circle NW
Rochester, MN 55901
www.climbroca.com/adaptiveclimbing

Rochester Community Education

201 8th St NW
Rochester, Mn 55901



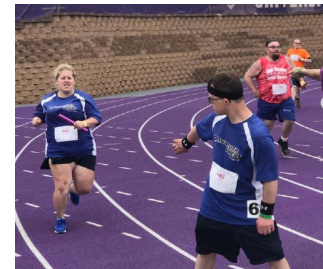
adults with exceptional abilities

We offer enrichment activities for adults with cognitive and developmental disabilities, including those on the autism spectrum. These classes include art, sport, games, cooking, recreational trips to theaters, riding stables, movie theaters, and more. We work closely with Rochester Parks and Recreation's AccessABLE Rec program. Contact Community Education at 328-4000 or go to our website <https://www.rochesterce.org/enrichment/adults-with-exceptional-abilities>

Rochester Flyers Special Olympics Team



We provide opportunities for participation in individual and team sports, as well as wellness education and social interaction. There is more information at:
www.specialolympicsminnesota.org
www.rochesterflyers.com



Contact: LeAnn Bieber
specialolympicsrochester@gmail.com
(507)421-5862

Rochester Swim Club Orcas



The Rochester Swim Club Orcas are proud to partner with the City of Rochester Parks and Recreation Department in administering and running the Rochester Outdoor Pools for the Summer months! We offer year-round private and group swimming lessons with low student to instructor ratios. Group lessons offered for all, ages 3-12 and private lessons for all ages. All levels are taught at each time offered. One and two lessons per week available.

244 Soldiers Field SW
Rochester, MN 55902

Education

Mad Hatter Wellness

www.madhatterwellness.com



We create comprehensive sexual health education programming that educates, trains, and empowers people with intellectual disabilities and their support systems. A lot of our education focuses on healthy relationships, boundaries, consent, and personal safety. We have a sexual health curriculum called Sexuality for All Abilities which is used in programs and schools all over the world. With the Sexuality For All Abilities program, we have curriculum, self-paced online classes, training, parent workshops, residency classes, and consulting. We also have a health and social emotional learning curriculum called The Power of Me which has training and workshops.

Send us an email at info@madhatterwellness.com or give us a call 612-524-8364.

Minnesota Independence College & Community

See page 24 in Independent Living.

Rochester Beacon Academy

www.rochesterbeaconacademy.org

Rochester Public Schools



We help our Title I schools plan Family Engagement events to boost student achievement. Our events are for the entire community and we welcome all students across the district to join. Our Family Engagement page includes a calendar for upcoming family engagement events.

507-328-4230

Kori Ring, Elementary Autism Coach, Rochester Public Schools
Hilary Clark, Secondary Autism Coach; Rochester Public Schools
koring@rochesterschools.org
hiclark@rochesterschools.org

We support our teachers working with students on the autism spectrum with curriculum and classroom accommodations as well as support our intensive classrooms.

The Zones of Regulation



The Zones of Regulation is the original framework and curriculum (Kuyppers, 2011) that develops awareness of feelings, energy and alertness levels while exploring a variety of tools and strategies for regulation, prosocial skills, self-care, and overall wellness. This curriculum provides us an easy way to think and talk about how we feel on the inside and sort these feelings into four colored Zones, all of which are expected in life. Once we understand our feelings and zones, we can learn to use tools/strategies to manage our different Zones in order to meet goals like doing schoolwork or other tasks, managing big feelings, and healthy relationships with others. The simple, common language and visual structure of The Zones of Regulation helps make the complex skill of regulation more concrete for learners and those who support them.

The Zones of Regulation has a number of award-winning resources to explore for families, practitioners, and educators to use with learners of all ages! For more information on The Zones of Regulation resources and Training, visit our website.

www.zonesofregulation.com
Email: info@zonesofregulation.com



Transportation

ANS Transportation

We are located at 1628 2nd Ave SE, right by the fairgrounds.

We provide, non-emergency transportation services to our clients. Our owner (Anwar Salah) has a son and a daughter who are on the spectrum. His son recently graduated from Minnesota Autism Center and his daughter is scheduled to finish this September. The experience he had trying to find reliable transportation for them is what drove him to form the company.

Our preferred contact method for quotes or ride information would be to email us at answecare@gmail.com. We are also happy to answer questions/quotes via phone at 507-517-5978.

Peace to your Puzzle

I am Sue Bauman I am owner of Peace to your Puzzle transportation. I provide transportation for children with autism and or special needs. This is where the puzzle come in because as your aware this is the symbol of autism, and peace is a big roll to the parents when they find out or small family-owned transportation is more than just that. We are safe and reliable, and they will get the peace they are looking for when sending their children with us because we are not strangers, their children will have the same driver every day, so the child and the parent knows who is picking up and dropping them off.

We are very small, so space is limited so we are not able to take every ride we are asked to do but I try my hardest to accommodate, because I know how important this piece the puzzle of the day for parents is in organizing their child's day.

Thank you,
Sue Bauman
507-358-3637

Day Programs & Respite Care

Hormel Historic Home

Mary Barinka--Community Autism Resource Specialist at the Hormel Historic Home. We have an Autism Friendly Austin initiative which I lead the charge in implementing.



We provide three summer camps, monthly respite/recreation event nights, quarterly parent/caregiver education events on various topics, individual resource and advocacy consulting, and community education in the form of Autism Friendly Austin presentations and certifications.

autism@hormelhistorichome.org
507-433-4243
www.hormelhistorichome.org/autism_programming

PossAbilities

www.possabilities.org

Rochester Poppins

www.rochesterpoppins.com

Housing, Independent Living & Vocational

ABC Ability Building Community

www.abcinc.org

Arsys

www.arsysllc.com

Bear Creek Services

We provide Individualized Home Supports with or without training in the person's own home or in the community. We have residential homes with 24/7 care. Our mission is to provide personalized community life experiences for individuals with disabilities and brain injuries.



Email: Info@bearcreekservices.org
Website: www.bearcreekservices.org
Phone: 507-288-7195
Facebook @BCSRochester

Cardinal of Minnesota

www.cardinalofminnesota.com

Courage Kenny Rehabilitation Institute Owatonna, MN | Allina Health

See page 10 under Occupational Therapy.

Hiawatha Homes

www.hiawathahomes.org

Minnesota Independent College and Community (MICC)

Minnesota Independence College and Community (MICC) is a nonprofit vocational and life skills training program for autistic and neurodiverse young adults. For over 25 years, our unique campus in Richfield, Minnesota, has provided participants who desire growing independence with the opportunity to engage in hands-on learning, education, support, and resources.



Our programs deliver curriculum and services in the areas of independent living skills, social and emotional learning, career skills and employment, and healthy living. We offer five distinct programs starting with our Summer Program, leading to our three-year College and Careers Programs, and next, with our life-long Community Program. Finally, our vibrant Social Program is integrated into our summer, three-year, and life-long program options.

MICC College.

The College Program is a three-year program that offers participants the opportunity to build foundational independent living skills while living on-campus and building relationships through activities and classes. Experiential learning is a cornerstone in all of our programming and paramount for participants to gain real-world knowledge to build independent living skills, vocational skills, and a network of personal relationships.

MICC Careers.

The Careers Program is integrated into both our three-year College Program and lifelong Community Program. Careers focuses on vocational skill development and the skills required to get and keep a job through an individualized, person-centered process to obtain access to the services, supports, and resources of participant's choice to achieve their desired career outcome. MICC has partnered with Century College to provide career certificate programs as part of our College curriculum in the areas of Culinary, Hospitality, Retail, and Health Services. Person-centered support services are provided through vocational skill-building curriculum and activities, and practicum experiences.

MICC Community.

The Community Program strives to empower College graduates to achieve their highest level of long-term independence in the community. Programming and service options are designed to provide person-centered social and emotional and problem-solving services, positive health and wellness supports, and continuing independent living skills development.

MICC Social.

The Social Engagement Program provides structured programming for participants to find their passions, develop friendships, and maintain healthy and active lifestyles to enhance their quality of life. Participants develop a sense of belonging and are accepted as their authentic selves while contributing positively to their community.

MICC Summer.

The Summer Program helps to develop valuable introductory independence skills. Taking the best of what MICC provides and incorporating a dynamic mix of expert staff from MICC's comprehensive College and Careers Programs ensures a fantastic summer opportunity

We invite you to learn more about MICC by visiting our social media platforms @miccbullogs and attending events, which can be found on our homepage. We look forward to connecting with you!

Website: www.miccommunity.org

Phone Number: 612-869-4008

Email: admissions@miccommunity.org

6-minute campus tour video - www.bit.ly/MICCtour2

Schedule a tour of campus or connect with admissions - www.calendly.com/miccadmissions



Opportunity Services

www.oppserv.org

Rochester Academy for Independent Living - Rochester Public Schools

Rochester Public Schools offers Rochester Academy for Independent Living (RAIL) to help young adults with disabilities integrate into the community and work settings. The program's goal is to assist the adults at RAIL in developing the independent living and social skills needed to become active, productive, and integrated members of their community.

<https://www.rochesterschools.org/academics/alternative/rail>

SEMCIL

www.semcil.org

Workforce Development Inc.

WDI is a private, nonprofit agency that serves job seekers and employers throughout Southeast Minnesota. We connect people with the resources they need to find and gain meaningful employment. Our knowledge of local labor trends, communities, resources, and employers makes us the premier supporter of the Southeast Minnesota workforce.

www.workforcedevelopmentinc.org/
Facebook @MaxAbilityMN
To contact MaxAbility, email Dawn Kirchner
at kirchner.dawn@mayo.edu

Workforce
DEVELOPMENT, INC.
*The Workforce Development Board
of Southeast Minnesota*

Legal

Autism Advocacy & Law Center, LLC

We provide a variety of legal services to families in the autism and disability communities,



AUTISM ADVOCACY
& LAW CENTER LLC.

including guardianship, estate planning, family law, criminal defense, and government benefits. Our goal is to be able to meet all of a family's legal needs at one law firm. Over the years, we have really enjoyed getting to know our many clients, and being able to help them navigate a complicated legal system with many moving parts.

Since the pandemic began, we have seen a large increase in the number of special education disputes. In addition to our firm, PACER Center and the Minnesota Disability Law Center also are great resources for special education legal advocacy.

Helping you meet their needs since 2009. Our mission is to provide high-quality, cost-effective legal services to individuals with disabilities and their families. Our attorneys understand the challenges that parents and caregivers of individuals with disabilities face. We take the time to work with you to understand your family, your child, your child's disability, and help you determine what options will best meet your family's needs.

612-200-9920
info@autismlawcenter.com
901 North Third Street, Suite 120
Minneapolis, MN 55401

www.autismlawcenter.com

Thiel, Anderson, Kukla & Gunderson, PLLP

Attorney Joseph P. Kukla of Thiel, Anderson, Kukla & Gunderson, PLLP, a boutique law firm located near Highways 494 and 100 in Edina.

Our practice is specifically focused on providing legal services to the special needs community. We do estate planning for parents/family members of individuals with disabilities, we represent clients in guardianship and conservatorship matters, and we advise/assist with the management of Social Security, Medical Assistance, housing and other issues. Our firm started providing these services when a former partner (Bob Gunderson) had a sister with developmental disabilities, and he became the premier attorney in the Twin Cities area for this type of practice. We have been carrying that purpose for over 40 years now and have thousands of clients with a wide range of disabilities including, of course, Autism Spectrum Disorder. I personally joined this firm because I have a younger brother with developmental disabilities that include an ASD diagnosis. I have now been doing this work for 15 years and have experience with a significant number of clients on the spectrum and the challenges faced both by them individually and their family in providing care. In addition to my personal and professional experience, I also spent several years as a certified coach for Special Olympics and as a licensed PCA.



The State of MN has a good website with a lot of information that has been organized to make it easier to follow. That would be MN Disability Hub (www.disabilityhubmn.org). Otherwise, I get most of my news on autism advocacy from the bigger organizations like Arc Minnesota and Fraser, and Volunteers of America provides some good info and assistance on their website (www.voa.org). If people are looking for resources to connect with professional services, the MAGiC organization is a good place. That is the Minnesota Association of Guardians and Conservators (www.minnesotaguardianship.org). Finally, there is a financial planner that we do some work with who has a daughter with more severe ASD, and he runs a business called Special Needs Planners (www.snplanners.com). There is a lot of good information on there about short and long term financial planning for parents who have children with autism.

We have our website: www.thielfirm.com. Our phone number is 952-920-8444. I also regularly participate in seminars and workshops, providing informative lectures on guardianship and estate planning.

Planning: Financial, Guardianship, Estate, etc.

Autism Advocacy & Law Center, LLC

See on page 27 in Legal.

Northwestern Mutual

Ivailo Grigorov, Financial Advisor with Northwestern Mutual. Chartered Special Needs Consultant through American College of Financial Services.

I work with families nationwide that have a dependent with special needs. I provide



Northwestern Mutual

guidance on overall planning for their loved ones - legal, financial, government benefits etc. I educate families on ABLE accounts, Special Needs Trusts, government benefits that may be available to them now or in the future and ways they can protect their loved ones and create efficiency with an overall financial plan. I have a 7 year old with a genetic condition and this topic is near and dear to my heart.

As I engage with a family, I help them develop a roadmap for the future. Depending on the need, I help families with coordination of special needs trust, guardianship, estimating future cost of care, benefits that they may qualify for. I can provide referrals to special needs planning attorneys, benefits navigation services etc.

Families can email (ivailo.grigorov@nm.com) or call (913.748.0662) to set up a time to discuss their situation. I don't charge a fee to meet with families and can provide guidance.



Thiel, Anderson, Kukla & Gunderson, PLLP

See on page 28 in Legal.

Advocacy

AuSM

www.ausm.org

Autism Advocacy & Law Center, LLC

See on page 27 in Legal.

The Arc Minnesota

The Arc Minnesota
6301 Bandel Road NW
Rochester, MN 55901
507-287-2032



We are a statewide organization, but have an office in Rochester. The Arc Minnesota promotes and protects the Human Rights of people with intellectual and developmental disabilities throughout the state. People with disabilities trust the Arc for information, assistance, education, advocacy and public Policy leadership. The Arc MN offers information and resources, a housing program, Advocacy, a Help Desk line, Self-Advocacy Programs, The Regional Quality Council and so much more.

Contact our Local office at 507-287-2032, Our Help Desk line at 866-797-1122 or our website at www.arcminnesota.org

MRCI

www.mrcicds.org/csg

Pacer

PACER Helps in Many Ways



Through more than 30 projects, PACER provides individual assistance, workshops, publications, and other resources to help families make decisions about education and other services for their child or young adult with disabilities.

PACER's National Bullying Prevention Center® provides resources designed to benefit all students, including those with disabilities.

PACER is for: Families and their children or young adults with disabilities or special health care needs from birth through adulthood; Educators and other professionals who work with students with or without disabilities; Parents of all children and schools working together to encourage family involvement in education.

RT Autism Awareness Foundation (RTAAF)

Here at RTAAF we EDUCATE, ADVOCATE, and UNITE. RTAAF is the sole fiscal sponsor for Project Lifesaver, a lifesaving program keeping loved ones safe at home. We are proud to partner with local law enforcement to bring Project Lifesaver to Olmsted, Dodge, and Wabasha counties. We operate our Community Autism Resource, Education, and Support group-a 12 week education and support program for families navigating a new diagnosis. We offer scholarships for adaptive programming for families, and work to provide opportunities for families to connect to activities offered in the community, and to connect families to one another.

Thiel, Anderson, Kukla & Gunderson, PLLP

See on page 28 in Legal.

Government Services

Rochester Community Education

See on page 18 in Recreation.

State of Minnesota: Disability Services Division EIDBI (Early Intensive Developmental and Behavioral Intervention) Team

The EIDBI benefit provides treatment for people with ASD and related conditions. Treatment is based on proven methods, and the values, culture and preferences of the person and family.

EIDBI services focus on supports that help a person: Interact with others; Learn and play; Improve functional communication; Build independence; Focus on goals that lead to an improvement in a person's quality of life; Have their wishes honored in family, school and community life.

www.mn.gov/dhs/eidbi

Disability Hub MN

www.disabilityhubmn.org



Minnesota Autism Resource Portal

<https://mn.gov/autism/>
ASD.DHS@state.mn.us



Olmsted County Disability Services Unit

Our team, which includes eight social workers and a supervisor, provides mandated case management services to families with a child with a developmental disability. Three revenue enhancement specialists provide support with state and county financial systems.



Health, Housing, and Human Services

Program Snapshot

Disability Services Unit: Children's Development Disabilities

The Children's Developmental Disabilities Unit provides case management services to families who have a child with a developmental disability. We serve children with a wide variety of diagnoses such as Down Syndrome, Autism, genetic disorders, cerebral palsy, and many other diagnoses that may cause developmental/cognitive delays.

- **Assessments:** We meet with families to complete a MnCHOICES assessment to determine eligibility for funding and services, as well as to assist with medical assistance applications.
- **Services & Support:** Once the assessment is complete, we work with the family to determine what available services and supports best meet the child's needs and assist with putting them in place. We provide support and assistance in helping families navigate a complicated service system. We are available to attend school IEP meetings. We also connect with adaptive recreational programs, medical providers, therapeutic services, Autism programs, advocacy programs, and others to coordinate the child's benefits.

Contact Katherine Schrandt, Program Manager
katherine.schrandt@olmstedcounty.gov | 507-328-6192

Contact Amy Thompson, Department Director
amy.thompson@olmstedcounty.gov | 507-328-6352

Project Lifesaver

www.rtaaf.org/how-we-can-help/project-life-saver.php

Rochester Fire Department



ROCHESTER
FIRE DEPARTMENT
FIRE MARSHAL

We provide emergency medical care and fire protection for all who live inside the city limits. We also provide fire prevention material at many of the events that are held in the City. There are different types of smoke alarms available. Work with your doctors for more information.

Jason Fife, Fire Inspector for the City of Rochester, MN.
Office number 507-328-2800
Email jfife@rochestermn.gov

If you live outside of the city limits please contact your local fire department.
For emergencies call 911.

Inclusive Stores

ABC & Toy Zone

Miracle Mile Shopping Center
122 17th Ave NW
Rochester, MN 55901
(507)286-8440
www.abctoyzone.com



We sell items that are good for children on the spectrum and with my two grandchildren being nonverbal, we have been adding items. We have way more in the store vs online. Stop into the store....

Schmitt's Stride Rite

Schmitt's Stride Rite

Schmitt's Stride Rite is a local, family-owned specialized children's shoe store that provides specialized children's shoes and orthopedic custom footwear to the Rochester, MN area.

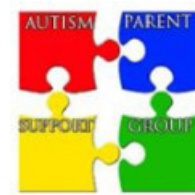
Whether your child uses orthotics, prosthetics, braces, or other specialized fitting needs, count on specialized service from Schmitt's Stride Rite.

We offer after-hours appointments as a way to help with your busy schedules. We're pet friendly, and we welcome service animals.

Family Support Groups

Albert Lea Area Autism Support Group

<http://bit.ly/alautism>



Autism Friendly Austin Parent/Caregiver Network Group

<https://www.facebook.com/groups/263641087985341/>



Autism Support & Discussion Group - Rochester, MN

<https://www.facebook.com/groups/1353297844727277/>



EARLY CHILDHOOD FAMILY EDUCATION (PAIR)

Parenting a Child with Special Needs (Birth-Grade 5):
<https://rochester.ce.eleyo.com/course/ecfe/19011/2022-fall-ecfe/parenting-a-child-with-special-needs-birth-grade-5>

<https://www.rochesterce.org/early-childhood/pair>



Epilepsy Foundation of Minnesota

Martin Hernandez- Regional Outreach Manager
Epilepsy Foundation of Minnesota



We provide connections to others who are also living with Epilepsy. We host Monthly recurring connect groups virtually, as well as a rotating series of Social Meet-ups. Our events are open to those living with Epilepsy, as well as people who have family and friends living with Epilepsy as well

We offer Seizure Smart Trainings, both by appointment and recorded. The recordings are open and available to all. SST Recordings: <https://www.epilepsyfoundationmn.org/support-training/trainings-webinars/video-request/>

Folks can call or email me. Phone: 507-287-2103 Email: Mhernandez@efmn.org

We host our Annual Epilepsy Walk in Rochester on 8/11/22 We have an events page: <https://www.epilepsyfoundationmn.org/events/>

Family Voices of Minnesota

www.familyvoicesofminnesota.org



Mayo Clinic Sibshops: Child Life Program

An opportunity for siblings to connect with others experiencing similar circumstances.

mayosibshop@mayo.edu



Sibshops is a program for siblings who have a brother or sister with chronic health, mental health or developmental needs.

OWL Therapy Services Sibling/Parents Group

<https://www.owltherapyservices.com/home>



RTAAF CARES Group

www.rtaaf.org

Family Friendly Locations

AirInsanity

www.airinsanity.com

County Parks, Pools, Beaches, & Playgrounds

Outdoor Pools & Beaches: <https://www.rochestermn.gov/government/departments/parks-and-recreation/parks-trails/facilities-directory/pools-beach>

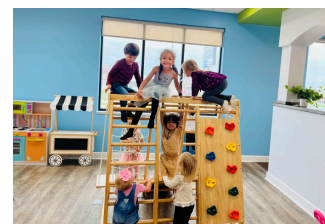
Passport for kids visiting the Rochester area parks, pools, beaches, and playgrounds:

<https://www.rochestermn.gov/home/showpublisheddocument/10619>

Nana Gogo Toybrary

Nana Gogo Toybrary is a toy library where children 5 and under can borrow and exchange toys as often as they like! An inclusive space you can come play for a daily play pass with hot coffee on the house for parents!

www.nanagogotoybrary.com



Oxbow Park Nature Center, Zollman Zoo & Path of Imagination Playscape

5731 County Road 105 NW
Byron, MN 55920

<https://www.olmstedcounty.gov/residents/parks-recreation/parks/oxbow-park-zollman-zoo>

Pipsqueaks Indoor Play Zone

Gymnasium of the United Way of Olmsted County Inc.,
903 West Center Street in Rochester.

Quarry Hill Nature Center & Park

701 Silver Creek Road NE
Rochester, MN 55906

<https://www.qhnc.org>

Red Barn Learning Farm

27251 State Highway 30
Hayfield, Minnesota 55940



The Scanlan family would like to welcome you to our cozy acreage just SW of Rochester, MN! The Red Barn Learning Farm is a destination that your kids will talk about for months to come. Come climb in the silo, jump on the straw bales in the barn, cuddle with a farm kitty, drive our pedal tractors, pick out your pumpkin, and visit our large variety of barnyard animals. We offer group tours for your organization, public hours for family fun, and use of our facilities for birthday parties/corporate events. Check out our calendar for availability. We can't wait to see you at the farm!

Check out their calendar of family friendly events and camps!

<https://www.redbarnlearningfarm.com/>



Spark

Sensory accommodations and a social storybook are available to prepare children for their visits.

Located in Apache Mall in the south corridor of the J.C. Penny wing.

<https://www.sparkrochestermn.org>

Sensory Friendly Trips

Autism Travel

www.autismtravel.com/

Taking a vacation together as a family can be challenging. We created Autism Travel to provide families and individuals with easy access to destinations and attractions that are trained and certified in autism and special needs care.

Como Park Zoo & Conservatory

Como Park Zoo and Conservatory is an energetic, colorful place full of sensory stimuli, and we know this environment can be overwhelming for some guests. These are some ways that Como strives to provide a positive, welcoming experience for every visitor. Join us from 9-10 a.m. during the listed dates for an inclusive experience at Como Park Zoo & Conservatory. Spend time exploring exhibits, and activities designed for individuals on the autism spectrum and their families.

<https://comozooconservatory.org/como/sensory-friendly-mornings/>

Mall of America

The Mall of America/Nickelodeon Universe Theme Park was the first place in Minnesota designated a certified autism center, which means at least 80% of the staff have completed training in sensitivity and awareness.

<https://www.mallofamerica.com>

Minnesota Twins

In April, they announced a suite-level sensory room for fans with special needs, including autism. It has 12 suite-level seats looking out over the first base line with an enclosed space and 2 rooms with comfortable seating, noise-canceling headsets, and lighting modifications. All guest services staff are receiving training on how to help these fans, who don't need a special ticket to access the space.

Minnesota Zoo

The Minnesota Zoo is excited to partner with the Autism Society of Minnesota (AuSM) to offer summer camp opportunities for youth with autism.

13000 Zoo Boulevard
Apple Valley, MN 55124

www.mnzoo.org

Navigating MSP Airport

A partnership between the Metropolitan Airports Commission, Fraser, and the Autism Society of Minnesota (AuSM), this program allows you to:

- Experience TSA security screening procedures
- Explore the terminal
- Board a plane and meet a pilot
- Prepare for takeoff
- Gather helpful tips and resources

<https://www.msppairport.com/navigating>



MINNESOTA
INDEPENDENCE
COLLEGE &
COMMUNITY

MICC

Learn Skills. Experience Life.

Lifelong friendships

It's what's important to our neurodiverse students with Autism Spectrum Disorder and learning disabilities.

Learn more at miccommunity.org



612.200.9920
Serving Minnesota since 2009

Helping You Meet Their Needs

AUTISM

901 North 3rd Street, Suite 120
Minneapolis, MN 55401

ADVOCACY

& LAW CENTER LLC.



AUTISM ADVOCACY & LAW CENTER LLC.



THERAPEUTIC
HEALTH



NORTHERN STAR
behavioral health llc



www.AutismResource.guide